

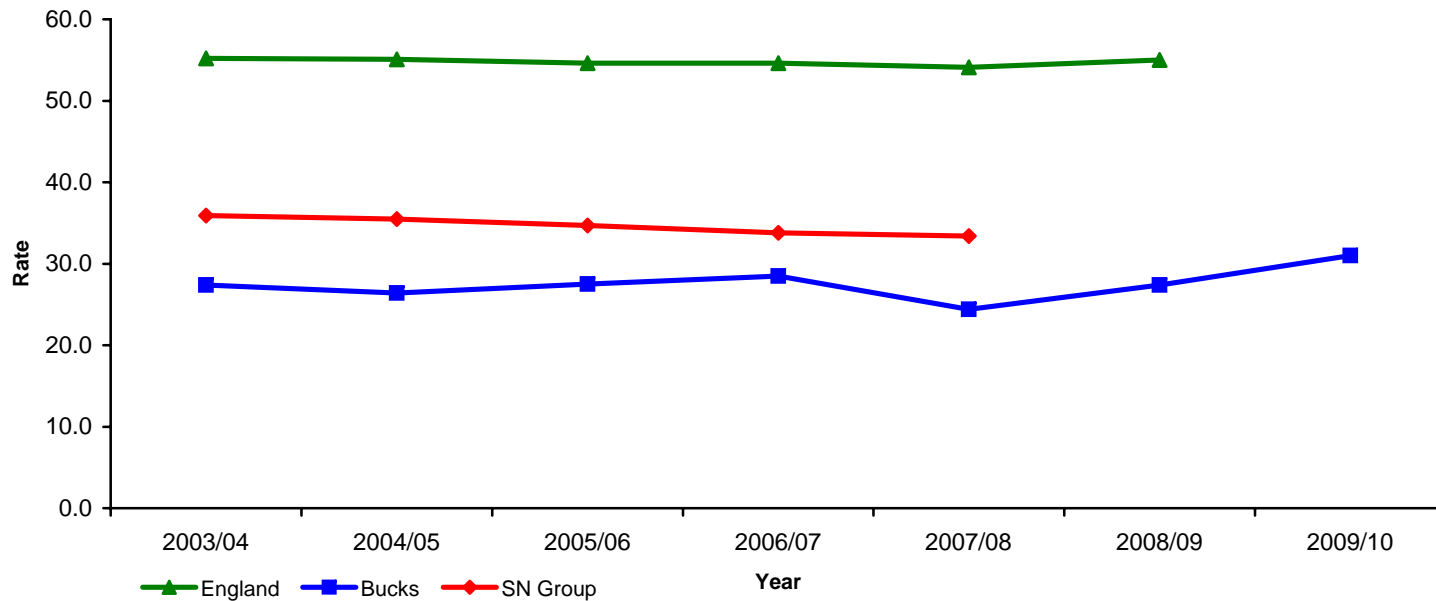
SSDA903 - Children Looked After

SSDA903 Return - Children Looked After at 31st March

<u>Year</u>	2005	2006	2007	2008	2009	2010 (Nov 09)
Number becoming looked after	112	116	99	65	134	
Number ceasing to be looked after	128	101	100	105	110	
Total number looked after at 31st March	296	317	316	287	313	355
Rate (10,000 0-17)	26.4	27.5	28.5	24.4	27.4	31.0
Statistical Neighbour Rate	35.5	34.7	33.8	33.4	n/a	n/a
England Rate	55.1	54.6	54.6	54.1	55.0	n/a

SSDA903 - Children Looked After

Children and young people who are looked after per 10,000 population aged under 18



	2003/04	2004/05	2005/06	2006/07	2007/08	2008/09	2009/10
Bucks	27.4	26.4	27.5	28.5	24.4	27.4	31.0
SN Group	35.9	35.5	34.7	33.8	33.4		
England	55.2	55.1	54.6	54.6	54.1	55.0	

Comment

The number of children looked after by Buckinghamshire has risen over the last 18 months, however is still slightly below the rate for similar authorities.

The number of children looked after has risen by 53 or 17% in the six months April to September 2009 and by 79 or 28% in the eighteen months from April 2008.